



Contents lists available at ScienceDirect

Explorations in Economic History

journal homepage: www.elsevier.com/locate/eeh

Patterns of innovation during the Industrial Revolution: A reappraisal using a composite indicator of patent quality

Alessandro Nuvolari^{a,*}, Valentina Tartari^b, Matteo Tranchero^c^a *Institute of Economics, Sant'Anna School of Advanced Studies, Piazza Martiri della Libertà 33, Pisa, 56127, Italy*^b *Copenhagen Business School, Copenhagen, Denmark*^c *Haas School of Business, UC Berkeley, USA*

ARTICLE INFO

JEL classification:

N73
O31
O33

Keywords:

Industrial revolution
Patents
Macroinventions
Microinventions

ABSTRACT

The distinction between macro- and microinventions is at the core of recent debates on the Industrial Revolution. Yet, the empirical testing of this notion has remained elusive. We address this issue by introducing a new quality indicator for all patents granted in England in the period 1700–1850. The indicator provides the opportunity for a large-scale empirical appraisal of macro- and microinventions. Our findings indicate that macroinventions did not exhibit any specific time-clustering, while microinventions were characterized by clustering behavior. In addition, we also find that macroinventions displayed a labor-saving bias and were mostly introduced by professional engineers. These results suggest that Allen's and Mokyr's views of macroinventions, rather than conflicting, should be regarded as complementary.

1. Introduction

Technical change has traditionally occupied a central place in the historiography of the Industrial Revolution. Not surprisingly, both contemporaries and historians have regarded technology as one of the key-factors shaping the dramatic economic and social transformations taking place in Britain during the XVIII and XIX centuries. This interest in technical change has resulted in a rich literature providing vivid descriptions of technical advances both in a broad, aggregate perspective (Landes, 1969; Mokyr, 1990; Trinder, 2013) and at a level of specific technologies such as steam power (Hills, 1989), textiles (Hills, 1970) and iron production (Hyde, 1977).

In this context, the distinction between microinventions and macroinventions originally proposed by Mokyr (1990) has established itself as a particularly useful interpretive tool for delineating an effective characterization of the patterns of technical change during this crucial historical period. In Mokyr's original formulation (Mokyr, 1990, p.13), microinventions are “small, incremental steps that improve, adapt and streamline existing techniques”, whereas macroinventions are “inventions in which a radical new idea, without a clear precedent, emerges more or less ab nihilo”.¹ The subsequent literature has expanded on this intuition by sketching several conjectures on the sources and effects of macro- and microinventions and on their interconnections (Allen, 2009; Crafts, 2011; Mokyr, 2010).

* Corresponding author.

E-mail address: alessandro.nuvolari@santannapisa.it (A. Nuvolari).

¹ Mokyr's view of technical change has many commonalities with the application of Thomas Kuhn's notions of paradigms and revolutions to technical change proposed by Constant (1973) and Dosi (1982). In Constant and Dosi's interpretation, microinventions are the outcome of inventive activities taking place within the boundaries of the prevailing “technological paradigm” – a cognitive framework guiding the search for innovations jointly adhered to by the relevant community of technological practitioners. In this perspective, a macroinvention in this sense of Mokyr is akin to the emergence of a new “technological paradigm” in Constant and Dosi's interpretations.

<https://doi.org/10.1016/j.eeh.2021.101419>

Received 4 September 2020; Received in revised form 16 June 2021; Accepted 17 June 2021

Available online 23 June 2021

0014-4983/© 2021 Elsevier Inc. All rights reserved.

The notions of macroinventions and microinventions are intuitively appealing and indeed resonate well with influential qualitative accounts of the contours of technical advance during the Industrial Revolution (Landes, 1969; Mathias, 1969). However, at closer inspection, the distinction between macro- and microinventions appears of difficult empirical implementation, especially if one is interested in reconstructions of broad patterns of technical change spanning more than a specific technology or industry.

In economic history, a consolidated research tradition has used patents to provide quantitative assessments of the rate and scope of technical change (see Sokoloff, 1988; Sullivan, 1989; Sullivan, 1990 for some early contributions). One of the main limitations of the use of “raw” patent counts for characterizing patterns of technical change is precisely that they do not take into account the relative importance of the underlying inventions (O’Brien et al., 1995), preventing the systematic identification of macroinventions.² In the case of modern patents, economists of innovation have addressed this issue by designing a number of indicators of “patent quality” based on the use of patent characteristics such as citations, jurisdictions coverage and renewals (Jaffe and Trajtenberg, 2002; Squicciarini et al., 2013; Van Zeebroeck, 2011). Unfortunately, these indicators are not immediately applicable to the case of the English patent system during the Industrial Revolution. Remarkably, when writing *The Lever of Riches*, Mokyr pessimistically concluded “... patent statistics [in the Industrial Revolution period] do not permit to distinguish between radical and minor inventions” (Mokyr, 1990, p. 82).

In this paper, we introduce a new composite indicator of the quality of English patents for the period 1700–1850. Our indicator of patent quality is a substantial refinement of the bibliographic indicator proposed by Nuvolari and Tartari, 2011 based on Bennet Woodcroft’s *Reference Index of Patents of Invention, 1617–1852*. We construct our new composite indicator by complementing Woodcroft’s *Reference Index* with information collected from a wide array of sources on the history of technology and biographical dictionaries. We combine these different sources using the approach introduced by Lanjouw and Schankerman (2004) for constructing composite quality indicators for modern patents. We validate the reliability of the new index of patent quality, which we term *Bibliographic Composite Index* (BCI), with several robustness checks.

The Bibliographic Composite Index provides the opportunity for a large-scale empirical implementation of the notions of macro- and microinventions, albeit only for the subset of patented inventions. In this way, we can reappraise a number of interpretive conjectures on the sources and effects of macro- and microinventions that have featured prominently in recent debates on the Industrial Revolution (Allen, 2009; 2018; Crafts, 2011; Mokyr, 2010).

We find that the distinction between macro- and microinventions is supported by the patent evidence. In particular, the time series of macroinventions exhibits statistical properties consistent with a major role of serendipity in determining their occurrence as originally suggested by Mokyr (1990). Vice versa, microinventions take place after the appearance of major breakthroughs and seem to display some correlation with the economic cycle, confirming earlier findings on the connection between patenting and business conditions (Ashton, 1948; Bottomley, 2014b). We also document that macroinventions possibly displayed a labor-saving bias which could be consistent with the so-called “high wage interpretation” of the Industrial Revolution proposed by Allen (2009). However, we find that macroinventions were not the results of the activities of “outsiders”, that is of inventors with occupations unrelated with the trade of the invention as Allen (2009) had suggested. Rather, in line with some recent contributions, we document that engineering specialists played a significant role in the development of macroinventions (van der Beek et al., 2020; Hanlon, 2020; Zeev et al., 2017).

2. Macro- and microinventions during the Industrial Revolution

The conceptualization of macro- and microinventions has informed much of the recent historiography on the origins of the Industrial Revolution. Notably, the acceleration of productivity growth taking place from the early 1820s is now generally interpreted as the delayed impact of the macroinventions of the second half of the XVIII century, which had to be refined and adapted by means of streams of microinventions before manifesting their economy-wide effects (Allen, 2009; Broadberry and Gupta, 2009; Crafts, 2021; 1995). In this respect, Mokyr emphasizes that macro- and microinventions are interdependent (Mokyr, 1990, p. 13): macroinventions represent the foundation on which the trajectories of cumulative inventions are built upon. Accordingly, the defining features of macroinventions are their radical novelty and their impact on subsequent technological developments. While this account of the connection between technical change and productivity growth is largely accepted, there is surely less consensus on the sources and effects of macro- and microinventions (Allen, 2009, 2018; Crafts, 2011; Meisenzahl and Mokyr, 2012).

Mokyr (1990) originally argued that macroinventions were the result of serendipitous discoveries and as such they were not responsive to economic forces. In subsequent contributions, Mokyr (2010, but see also Mokyr 2002, pp. 52–53) has rehearsed this theme by pointing to the connection between the relatively autonomous expansion of the stock of useful and reliable knowledge (driven, during the XVIII century, by the emergence and consolidation of the “culture of improvement” of the “Industrial Enlightenment”) and technical advances (Crafts, 2011, pp. 163–164). In an analogous vein, O’Brien (1997) uses the example of Edmund Cartwright to press a similar point: the activities of the “macroinventors” of the Industrial Revolution cannot be subsumed as the outcomes of broader economic, social or cultural forces. On the contrary, the history of the Industrial Revolution must remain open to the “contingent character of technological discovery at this time” (O’Brien, 1997, p. 205) and, therefore, is bound to contain an irreducible element of biography and narrative.³ The stochastic nature of macroinventions is also a theme developed by Crafts (1977, 1995) when point-

² As vividly remarked by Reingold (1960, p. 157): “Research [on historical patents] is often frustrating [...] because one seeks evidence of intellectual breakthroughs and finds the bric-a-brac of industrial societies”. We thank Elisabeth Perlman for pointing this reference to our attention.

³ Relatedly, Constant (1973) argues that “technological revolutions” are instigated by “individual provocateurs” and that the answer to the question of why one inventor develops a macroinvention while another with similar training and background does not, may be lost “in the inaccessible

ing out that much of the literature on the origins of industrialization may be vitiated by “post hoc, propter hoc” fallacies. Indeed, according to Crafts, “[t]echnological history suggests that seeking for socio-economic explanations of macroinventions is likely to be a fruitless pursuit” (Crafts, 1995, p. 596).

Allen (2009) has challenged these interpretations suggesting an alternative economic deterministic view of technological change which comprises not only microinventions, but also macroinventions. Allen claims that the salient feature of the macroinventions of the Industrial Revolution is that they brought about major shifts in factor proportions with respect to the technology in current use. In particular, they substituted capital and energy for (high wage) labor. The development of inventions that were very distant in terms of factor proportions from the existing best-practice technology required major investments and costly experimentation. Therefore, it is unlikely that inventors and their financial backers would have incurred the developing costs necessary to move from ideas to workable prototypes, without the prospect of substantial economic returns.

Furthermore, Allen (2009, p. 149) argues that macroinventions were typically the brainchild of “outsiders” which could more easily steer away from current technological practices and imagine radically alternative solutions, involving major changes in factor proportions.⁴ On the other hand, microinventions were due to insiders who improved and refined the prototype macroinventions by means of localized processes of learning-by-doing and learning-by-using. In this way, Allen maintains that the patterns of innovation of the Industrial Revolution can be accounted for using the model of localized technical change introduced by Paul David in his influential interpretation of the “Habakkuk debate” on the labor-saving character of American inventions during the XIX century (David, 1975).

By and large, the characterizations of macro- and microinventions of Allen, Mokyr and other historians have been formulated by drawing generalizations from the history of specific inventions or inventors’ biographies. This, once more, testifies that systematic quantitative evidence on macroinventions is generally not readily available in the sources. In a seminal paper on inventive activities in XIX century America, Khan and Sokoloff (1993) have shown the potential of biographical dictionaries as a source for the study of macroinventions. Their paper contains a detailed quantitative scrutiny of the careers and patents of 160 “great inventors” retrieved from the *Dictionary of American Biography* (see also Khan, 2005, chap. 7). The underlying assumption is precisely that this sample of “great inventors” can represent a suitable vantage-point for the study of macroinventions in the sense of Mokyr.⁵ Khan and Sokoloff show that the inventive activities of the “great inventors” were responsive to the economic cycle and they tended to cluster geographically in areas with low-cost transportation networks which were better suited for the economic exploitation of their inventions. This result suggests that, at least in the American case, commercial considerations were a major driver of macroinventive activities, against the original conjecture proposed by Mokyr. In a subsequent contribution, Khan (2018) applies the “great inventors” approach to the British case during the period 1750–1930 using a sample of 439 inventors. In this case the main concern of the paper is the role played by human capital in the generation of macroinventions and the conclusion is that a scientific background or a formalized education were not critical for inventive activities until at least the second half of the XIX century. Furthermore, Khan (2018) documents that the inventors responsible for macroinventions had substantial knowledge of their trade accumulated by means of apprenticeships and protracted practical experience. This paper expands on this line of research by introducing a new quality indicator for English patents. By means of this indicator, it will be possible to provide a complete mapping of the quality distribution of English patents and to identify its upper tail containing the macroinventions.

3. The construction of the Bibliographic Composite Index of patent quality

3.1. Sources

Our composite index combines three quality indicators for the 13,070 English patents granted during the period 1700–1850.⁶ The first indicator captures the visibility of each patent in the contemporary engineering and legal literature, as summarized in Bennet Woodcroft’s *Reference Index*.⁷ This quality indicator (dubbed WRI) has been originally proposed by Nuvolari and Tartari, 2011 and it counts the number of times each patent was mentioned in the set of specialized publications scrutinized by Woodcroft and his team of

personalities of individual men... no conception of paradigmatic change that confines itself to economic factors, however sophisticated its definitions of demand and expected costs might be, would be likely to grasp the full complexity of technological revolution. New paradigms are the progeny of beings, somewhat less, or somewhat more than ‘economic man’ ” (Constant, 1973, p. 557, 559).

⁴ Interestingly enough, the hypothesis that macroinventors will typically be “outsiders” is also entertained by O’Brien (1997).

⁵ Allen (2009, chap 10) adopts the “great inventors” approach to study the character of macroinventions during the Industrial Revolution using a sample of 79 inventors. His main conclusion is that the connection between the “Industrial Enlightenment” and macroinventions was weak and irregular. Meisenzahl and Mokyr, 2012 construct a sample of 759 inventors active in Britain during the Industrial Revolution period. Since the focus of their paper is on the adaptation and refinement of technological breakthroughs, rather than on the origins of macroinventions, they decide to adopt a relatively large sample.

⁶ The patent quality dataset constructed in this paper is available in Nuvolari et al. (2021).

⁷ The *Reference Index* was a component of larger set of volumes that were published following the requests of the Patent Office Commissioners after the patent reform of 1852. Before the reform of 1852, a patent application could be lodged in any of these public offices in London: Rolls Chapel, Petty Bag and Enrolment Office. The system did not have an effective search catalogue, so that the consultation of patent specifications was difficult and time-consuming. The Patent Office Commissioners addressed this issue by funding the publications of a series of indexes and abridgments for all patents granted in the period 1617–1852. Bennet Woodcroft, professor of machinery, inventor and patent agent, was entrusted with the publications of the indexes. Together with the *Reference Index*, Woodcroft and his team published an *Alphabetical Index of Patentees*, a *Chronological Index of Patents*, a *Subject Index of Patents* and a series of *Abridgments of Patent Specifications* (Nuvolari and Tartari, 2011).

Table 1
Patents and inventors coverage of the sources used to construct patent eminence and inventor eminence.

Patent eminence			Inventor eminence		
Source	Inventors	Patents	Source	Inventors	Patents
Baker (1976)	123	150	Oxford DNB	291	893
Carter (1978)	201	266	Allen (2009)	76	234
Desmond (1987)	128	157	Day and McNeil (1996)	240	708
Inkster (1991)	27	44	Abbott (1985)	57	246
Dudley (2012)	33	55	Murray (2003)	54	199
Challoner (2009)	41	49	De Galiana (1996)	102	333
Bridgman (2002)	33	38	Meisenzahl and Mokyr (2012)	536	1519
Bunch and Hellemans (2004)	71	93	Benson (2012)	59	206
Ochoa and Corey (1997)	23	24	Gergaud et al (2016)	179	595
Lilley (1948)	28	33			

Note: This table reports the number of patents and inventors mentioned in each source. The left side contains the sources grouped into the indicator of Patent Eminence, while on the right side there are those concerning Inventor Eminence.

clerks.⁸ Note that the WRI has a mechanically increasing average value reflecting the expansion of the literature on technology and patents during the XVIII and first half of the XIX century. For this reason, Nuvolari and Tartari, 2011 adjust the raw WRI indicator for time-effects, as we will also do in the next Section.

The second patent quality indicator is based on the relative visibility of patents in modern reference books on the history of science and technology. This approach is based on the original intuition of Schmookler (1966), who compiled lists of “important inventions” on the basis of the detailed scrutiny of specialized historical and engineering sources for a selection of sectors (agriculture, railroading, petroleum refining and paper making) as a robustness check for using patents as a proxy of inventive activities. In our case we have considered ten reference volumes (the full list is reported in the Appendix). These sources typically report the inventor and the year of the invention in question. Using Woodcroft’s *Chronological Index* (Woodcroft, 1854b) which contains the date in which a patent was applied for and a summary description of each invention and Woodcroft’s *Alphabetical Index* (Woodcroft, 1854a) which contains an alphabetical list of all patentees and their patents, we were able to match the “important inventions” listed in our sources with their corresponding patents. For each patent we count the number of times it is mentioned in this set of sources, obtaining in this way a quality score that we call Patent Eminence (PAT_EM). A similar aggregation procedure was adopted by Kleinknecht (1990) for constructing a quality indicator based on the integration of different lists of radical innovations in the context of the literature on “long waves”. Table A2 in the Appendix reports the patents with the highest values of PAT_EM. It is important to remark that the set of sources that we use to construct this quality indicator has a high degree of internal consistency (i.e., agreement in the identification of high-quality patents), with a Kuder-Richardson 20 coefficient of 0.7792.⁹ The third quality indicator considers the relative visibility of the patentee in biographical dictionaries and similar sources. As we have already mentioned, Khan and Sokoloff (1993) were the first to use this method for identifying the inventors responsible for the most significant innovations in XIX century America. As in Khan (2018), instead of relying on a single source, we have collected data from nine biographical dictionaries and analogous sources (the details are again provided in the Appendix). In this case, we have mostly used Woodcroft’s *Alphabetical Index* (Woodcroft, 1854a) to match inventors with their patents. This third quality indicator that we term Inventor Eminence (INV_EM) is constructed in a similar way to the previous two by counting the number of sources that mention each patentee. Table A4 in the Appendix reports the inventors with the highest scores of INV_EM. Also in this case, the set of sources used displays a high degree of internal consistency with a Kuder-Richardson 20 coefficient equal to 0.8511.¹⁰

Table 1 summarizes the number of patents and inventors mentioned in each of the sources used for constructing PAT_EM and INV_EM. Of course, it must be acknowledged that the sources we have used for the construction of both PAT_EM and INV_EM are not completely independent. For example, Meisenzahl and Mokyr, 2012 rely on Day and McNeil (1996). However, even in these cases, each source reflects, to a sufficient degree, an autonomous assessment of the historical significance of inventors and inventions. In the case just mentioned, Meisenzahl and Mokyr found it necessary to augment the selection of Day and McNeil with several other sources (Meisenzahl and Mokyr, 2012, p. 454). Notwithstanding these limits, we therefore consider our two variables PAT_EM and INV_EM as providing a useful synthesis of the historiography of the Industrial Revolution concerning major inventions and inventors.

⁸ The WRI has been used in several recent studies (Bottomley, 2014a,b; Crafts and Wolf, 2014; Dowey, 2017; Squicciarini and Voigtländer, 2015) while Hanlon (2015) has adopted a similar approach to construct a quality indicator for patents in cotton textiles in the period 1855–1876.

⁹ The Kuder-Richardson 20 coefficient (for more details, see Gwet, 2014) is an indicator of internal consistency for binary variables, ranging between 0 (no consistency) and 1 (perfect consistency). In our case, for each source we construct a binary variable indicating whether a patent is considered by a specific source as an important invention and compute the index across all the sources. In this way, the indicator measures the agreement existing in our set of sources in highlighting significant inventions or inventors.

¹⁰ Table A5 in the Appendix shows that the Kuder-Richardson 20 coefficients remain substantially unchanged when excluding one source at the time, both in the case of patents and patentees. This provides further corroboration of the substantial homogeneity of the set of sources used for constructing the quality indicators.

Table 2
Quality indicators for selected patents .

Patent no.	Year	Inventor	Invention	Woodcroft references	Patent eminence	Inventor eminence
542	1733	John Kay	Flying shuttle	1	10	8
556	1736	Jonathan Hulls	Steam-propelled ship	9	0	5
931	1769	Richard Arkwright	Water frame	3	10	9
1111	1775	Richard Arkwright	Carding machine	15	3	9

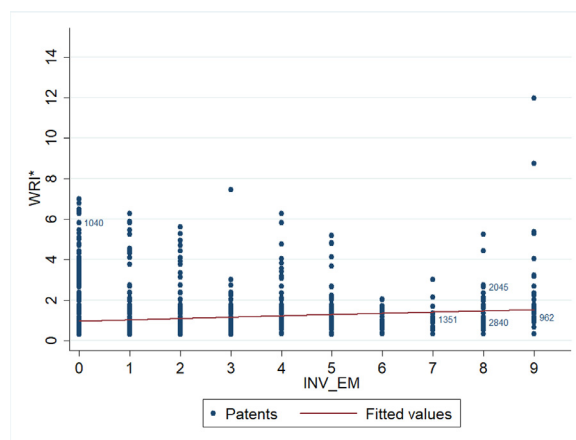


Fig. 1. Scatterplot of WRI* and INV_EM. Note: WRI* is the time-adjusted index of patent quality proposed by Nuvolari and Tartari, 2011 based on the number of references listed in Woodcroft (1862).

3.2. Properties of the quality indicators

Table 2 contains two examples that illustrate some interesting properties of the three quality indicators. The first panel compares John Kay's patent for the flying shuttle (1733), which has a surprisingly low value of WRI, and Jonathan Hulls' patent for a steam-boat (1736), which, although of limited practical significance, raised a good deal of attention among contemporaries.¹¹ Clearly, in this case, PAT_EM and INV_EM provide a more sensible assessment of the relative historical significance of the two patents than WRI. The second panel of Table 2 compares Richard Arkwright's famous patents for the water-frame (1769) and for the carding machine (1775). The first invention was the fundamental breakthrough that revolutionized the cotton industry, while the second patent was involved in a contentious legal trial and it was ultimately repealed. The controversial legal case accounts for the higher value of WRI for this second patent, relatively to the water-frame. In this case the PAT_EM indicator seems more in tune with the established historical interpretations on the importance of the two patents. Both examples show the potential of PAT_EM and INV_EM to complement and correct some limitations of WRI, thereby increasing the signal-to-noise ratio.

It turns out that the three quality indicators that we have constructed are characterized by significant positive correlations, but the size of the correlations is quite low.¹² In our interpretation, this suggests that the three indicators capture different dimensions of the quality of innovations. Fig. 1 displays the behavior of INV_EM and WRI* by means of a scatterplot.¹³ Clearly, biographical dictionaries highlight all the patents taken by the leading historical inventors of the Industrial Revolution. In this way, INV_EM reinstates the importance of patents such as James Hargreaves' spinning jenny (patent n. 962) and Henry Cort's puddling process (patent n. 1351) that were relatively overlooked by WRI*. Another merit of INV_EM is that it can mitigate the tendency of WRI* to emphasize patents that were renowned for reasons that were not directly connected with their technological and economic significance. For example, John Liardet's patent (n. 1040) was the subject of the famous ruling *Liardet vs Johnson* which, traditionally, has been regarded as firmly settling the issue of the specification requirements.¹⁴ In this case, the relatively high score of WRI* is essentially due to legal

¹¹ The patent of Jonathan Hulls (1699–1758), even if sketching an awkward design, attained a certain degree of popularity and may have provided some inspiration to Symington and other pioneers of steam navigation, but there is no recorded evidence of any practical trial of the steam tugboat described in the specification (Robinson, 2004).

¹² The Spearman correlation coefficients are: WRI/PAT_EM = 0.0710, WRI/INV_EM = 0.0645, INV_EM/PAT_EM = 0.3001. All correlations are significant at the 0.1% level. See Table A7 in the Appendix for further details.

¹³ The index WRI* is the index WRI adjusted for time-effects. This is the favorite quality indicator based on Woodcroft's *Reference Index* proposed by Nuvolari and Tartari, 2011. For the examples of Table 2 we did not use the time adjustment because the patents involved belonged to the same time cohort.

¹⁴ Bottomley, 2014a actually shows that the contractual conceptualization of the patent involving the requirement of a sufficiently clear specification had several legal antecedents in the previous fifty years.

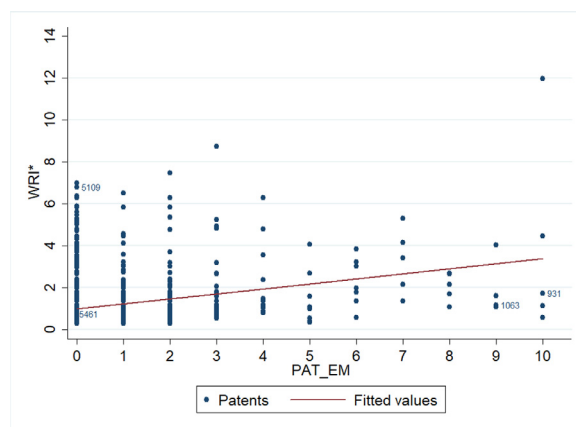


Fig. 2. Scatterplot of WRI* and PAT_EM .

references, while the underlying invention was of relatively modest technical significance (Adams and Averley, 1986). Conversely, also INV_EM is fraught by some limitations. By construction, it is not able to discriminate the historical significance of the patents granted to the same inventor. The problem is severe for the case of prolific patentees such as Joseph Bramah. One of the most important inventions of Bramah was the hydraulic press (patent n. 2045), while patent n. 2840 for improvements in “paper manufacture and printing” was a relatively minor invention. As Fig. 1 shows, in this case, INV_EM neglects this distinction, while WRI* is instead able to discriminate the relative importance of the two patents of the same inventor.

Similar considerations can be made for PAT_EM, whose correlation with WRI* is depicted in Fig. 2. In this case, in the bottom right corner there are several patents with low values of WRI* that are characterized by high values of PAT_EM, such as John Wilkinson’s boring machine (patent n. 1063) and Richard Arkwright’s water-frame (patent n. 931). The compilers of the *Reference Index* had to examine a very large and heterogeneous set of sources without the benefit of hindsight, so it is not surprising that a few patents covering significant technological breakthroughs have a low number of references. It is indeed difficult to tell, in each specific case, whether the low number of references is due to a minor impact of the patent in the literature, or to some oversight of the compilers. Furthermore, the bulk of the literature scrutinized by the examiners was published in the early XIX century, which can perhaps explain why some significant XVIII century inventions were short-changed in the Reference Index. Clearly, PAT_EM has the advantage of the benefit of hindsight, since the compilers of the sources used for its construction could rely on a large historiographical literature debating the technological and economic significance of the inventions of the period in question. On the other hand, PAT_EM is not very granular and while it is well suited for pointing to the major breakthroughs, it tends to overlook the heterogeneity characterizing the bulk of the patent quality distribution. For instance, both Cornelius Whitehouse’s process for manufacturing iron tubes (patent n. 5109) and Sir William Congreve’s engine (patent n. 5461) have a score of PAT_EM of 0. However, the former was a commercial blockbuster that allowed the production of cheap gas pipes, while the latter was a technically flawed design that wishfully hoped to create a perpetual motion by means of water’s capillary attraction.¹⁵ In this case, WRI* seems to provide a more sensible assessment of the relative quality of the two patents.

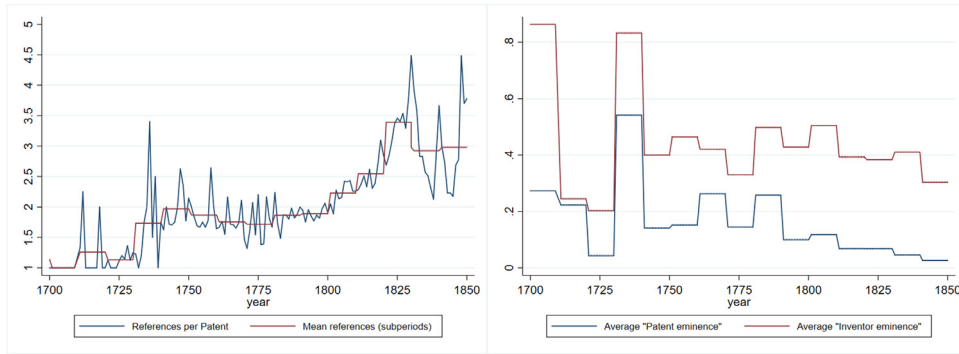
This discussion suggests that the three indicators are plausibly capturing complementary dimensions of patent quality. WRI* seems better equipped to assess the quality of incremental innovations, for which only very fragmentary information is available today, while INV_EM and PAT_EM are more suited to gauge technological breakthroughs by virtue of the benefit of hindsight. In the Appendix we further discuss the properties of these three indicators.

3.3. The Bibliographic Composite Index (BCI)

The integration of different quality indicators into a single composite index is an intuitively appealing approach allowing to retain the common information signaling patent quality, while mitigating the noise and idiosyncrasies of the individual sources (Van Zeebroeck, 2011). Here, we adapt the approach introduced by Lanjouw and Schankerman (2004) for composite quality indicators in modern patents to our sample of historical patents.

Fig. 3 (a) shows the average number of references per year and per decade in Woodcroft’s *Reference Index*, whereas Fig. 3(b) shows the average scores of PAT_EM and INV_EM per decade. The main point emerging from Fig. 3(a) and (b) is that the three quality indicators may be affected by significant time-variations and, therefore, using the “raw” scores for comparing patents granted in different periods may lead to biased results. At the same time, it is possible that some technological fields will receive more extensive treatment either in the coeval or in the modern sources for reasons not completely related with their technological significance (e.g.,

¹⁵ Congreve was a prolific inventor (18 patents) and his most famous invention is probably the “Congreve rocket”. This explains why the patents of this inventor have a relatively high score of INV_EM (6). This example further shows the potentialities of using WRI*, PAT_EM and INV_EM in combination.



(a) Average number of references per patents in Woodcroft (1862), yearly and by decade. (b) Average number of references per patents by decade.

Fig. 3. Average number of references per patents over time.

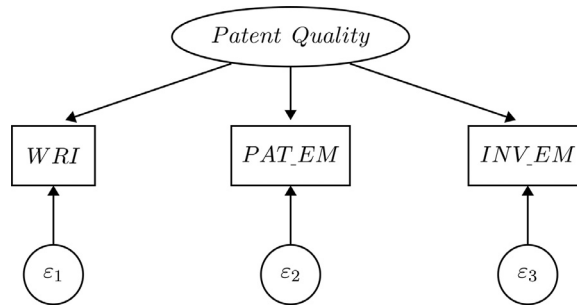


Fig. 4. Structural equation model used to extract a latent common factor from the residuals of Poisson regressions that control for time and industry effects.

appeal or fascination with specific inventions). This suggests to control also for technology fields. Note that similar concerns are present also in modern patent data where patent citations are typically adjusted considering time and industry effects (Hall et al., 2002).

In order to account for these possible temporal and sectoral effects, we estimate the following three regressions with robust standard errors:¹⁶

$$WRI_i = e^{(\alpha + \sum_{m=1}^M \beta_m Dyear_m + \sum_{n=1}^N \delta_n Dsector_n)} \quad (1)$$

$$PAT_EM_i = e^{(\alpha + \sum_{m=1}^M \beta_m Dyear_m + \sum_{n=1}^N \delta_n Dsector_n)} \quad (2)$$

$$INV_EM_i = e^{(\alpha + \sum_{m=1}^M \beta_m Dyear_m + \sum_{n=1}^N \delta_n Dsector_n)} \quad (3)$$

where $Dyear_m$ are the dummies for the decades from 1700 to 1850 ($M = 15$), $Dsector_n$ are the sectoral dummies ($N = 21$),¹⁷ and WRI_i , PAT_EM_i , INV_EM_i are the raw scores of the three quality indicators for patent i . The intuition is that the residuals of each regression will capture the share of variance due to the intrinsic quality of the individual patent. However, it is worth noticing that our results on macroinventions hold even when we construct the quality index without considering these sectoral and time adjustments (Table A10 in Appendix).

The final step is to extract from the residual a latent common factor using the structural equation model (SEM) represented in Fig. 4 (Lanjouw and Schankerman, 2004). This is tantamount to estimating a multiple indicator model with one latent common factor:

$$y_{ki} = \alpha_k + \lambda_k q_i + \epsilon_{ki} \quad (4)$$

where y_{ki} indicates the value of the k th indicator for the patent i ($k = 1, 2, 3$ and $i = 1, \dots, 13,070$) and q is the common factor with loadings λ_k . From the estimation of the structural equation model we can derive for each patent the value of the latent factor (q_i). As noted by Lanjouw and Schankerman (2004), the common factor captures all the unobserved characteristics of patents that influence

¹⁶ As a robustness check, we have also carried out negative binomial regressions obtaining nearly identical results.

¹⁷ We have used the sectoral classification introduced by Nuvolari and Tartari, 2011.

Table 3

Factor loadings of the bibliographic composite index (BCI) resulting from the SEM estimation.

	Residuals WRI	Residuals PAT_EM	Residuals INV_EM
λ	1	1.1746***	1.8698***
	–	(0.1401)	(0.2619)

Note: *** denotes significance at 0.1% level. λ_k are the factor loadings on the common factor q , representing the BCI. Standardized root mean squared residual= 0.000; Coefficient of determination= 0.698.

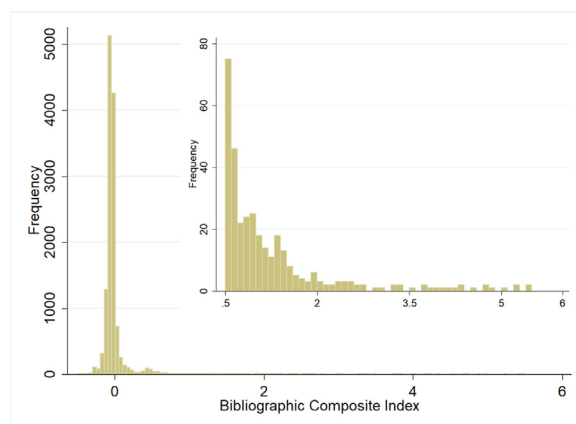


Fig. 5. Empirical distribution of the Bibliographic Composite Index; the box in the top-right of the figure reports the upper-tail of the distribution (BCI > 0.5).

the three original quality indicators. Accordingly, we can interpret the latent common factor q as a composite measure of patent quality that we label *Bibliographic Composite Index* (BCI). The factor loadings of the common factor are reported in Table 3.

Fig. 5 displays the distribution of BCI. The index is very skewed with an extremely long tail. This result is fully in line with the distribution of patent quality found in modern patent data (Silverberg and Verspagen, 2007). Typically, the replication of this stylized fact has been regarded as preliminary validation for composite indicators of patent quality (De Rassenfosse and Jaffe, 2015). In this paper, however, we prefer to use the composite quality index only as an ordinal, rather than a cardinal indicator. Accordingly, we will consider only the ranking of patents according to the index. In this respect, it is worth noting that the rankings we have obtained are robust to alternative aggregation procedures (factor analysis, Borda ranking, non-linear SEM specifications). At the same time, by constructing the BCI using the three “raw” quality scores or using the residuals of Poisson regressions with different sets of time and industry controls, we have obtained highly overlapping sets of top quality patents, confirming the general robustness of the procedures adopted for the construction of the BCI (see Appendix).

3.4. Validation of the index

Prima facie, the list of top-quality patents (Table A11 in the Appendix) seems to provide a plausible selection of the fundamental technological breakthroughs of the Industrial Revolution, comprising Watt’s separate condenser, Hargreaves’ spinning jenny, Arkwright’s water-frame and Wheatstone’s telegraph. It is also interesting that our top-list contains a number of significant technological breakthroughs (Meikle’s threshing machine, Colt’s revolver, Aspdin’s Portland cement, Hadley’s octant, etc.) that have not been emphasized by the treatments of Landes (1969) or Mokyr (1990). This highlights the potential of the BCI index to expand the analysis of macroinventive activities beyond the standard metanarratives of the Industrial Revolution. A small number of the macroinventions discussed by Mokyr (1990, 1991) such as the breast wheel, the spinning mule and the air balloon are not included because they were not patented in Britain. Among patented inventions, possible omissions with respect to Mokyr (1991)’s discussion of macroinventions are gas lighting and chlorine bleaching. In the case of gas lighting, since we are dealing with a complex technological system with several components, the characterization in terms of one unique foundational innovation and follow-up improvements is probably not fully appropriate (Tomory, 2012). Note, however, that Samuel Clegg’s gasometer is ranked 69 (patent n. 4283) while his gas-apparatus (patent n. 3968) is ranked 94.¹⁸ In the case of chlorine bleaching, Charles Tennant’s patent for bleaching powder (patent n. 2209) is ranked 102. Clearly, this suggests that some circumspection is necessary in establishing the threshold that demarcates

¹⁸ Mokyr (1999, p. 20) acknowledges that, in some cases, macroinventions may involve “a number of steps that together were necessary for the new paradigm to emerge”. However, Mokyr (1991, pp. 268–269) regards Philippe Lebon’s “thermolamp” (which was patented in France, but not in

Table 4
Fligner–Policello tests of stochastic equality for BCI validation.

	Fligner–Policello statistics
Extended to all UK	11.072***
Time Extension	15.292***
Litigated Patents	35.430***
Perpetual Motion	−5.062***
“Impossible” Engines	−2.765**

Note: **, *** denote significance at 1% and 0.1% level. The Fligner–Policello test determines whether for two random variables X and Y it is statistically significant that $Prob[X > Y] > 0.5$. In all cases, the null hypothesis of stochastic equality is rejected at a high significance level. Data for geographical coverage are taken from [Bottomley, 2014a](#) (1247 patents extended to the entire United Kingdom), while the lists of patents that were litigated (355 cases) and for which a time extension was petitioned (95) are taken from [Woodcroft \(1862\)](#). Data for perpetual motion machines are taken from [Dircks \(1861\)](#) (23 patents) and the lists of 83 engines that were not technically feasible is the same employed by [MacLeod et al. \(2003\)](#). A negative sign of the Fligner–Policello statistics indicates that patents in the list considered are of lower average value than the excluded remainder. All the results hold if we employ Mann–Whitney–Wilcoxon median test.

macroinventions from the rest. Moreover, it is worth noticing that the list of top-quality patents includes some inventions, such as John Barber’s gas turbine (patent n. 1833) and Stirling’s hot-air engine (patent n. 4081), that while fitting well in Mokyr’s definition of macroinventions as radical novelties, did not have major economic effects in the period we are considering, also for the limitations of the technology of the time which prevented their effective exploitation.

A further impressionistic assessment of the degree of technological novelty of the inventions in the list of top-quality patents is provided by an examination of the “titles” of the patents ([Woodcroft, 1854b](#)). Some of the key patents of the Industrial Revolution have titles that are evocative of their radical novelty with respect to the existing best practice; for instance, the title of James Watt’s patent (n. 913) is “New invented method of lessening the consumption of steam and fuel in fire engines” and that of James Hargreaves (n. 962) is “Engine of an entire new construction (never before used) for spinning, drawing, and twisting cotton” (patent n. 962). Indeed, the incidence of the word “new” among the titles of the top-quality patents (23% and 26.7% in the top 0.5% and top 1% quality percentile, respectively) is much larger than in the rest of the distribution (9.6%).

The BCI is also effective in the assessment of the significance of some lesser known inventions. Consider the case of the powerloom studied by [Allen \(2018\)](#). The macroinvention developed by Cartwright was a functioning prototype, but still plagued by defects that greatly limited its application. Thanks to the improvements introduced by Thomas Johnson and later by Richard Roberts, the machine successfully led to major productivity improvements. The importance of these macroinventions is indeed captured by the BCI that collocates the patents in question in the 95th percentile of the quality distribution.

As a further validation, in [Table 4](#), we study the behavior of BCI with respect with some alternative independent measures of patent quality. We consider: (i) patents whose inventors paid additional fees in order to extend their coverage to Scotland and Ireland ([Bottomley, 2014b](#)), (ii) patents that were litigated in court ([Bottomley, 2014a](#)), (iii) patents whose inventors petitioned the Parliament asking for an extension. The logic for considering these characteristics is based on studies on modern patents that suggest that more valuable patents tend to have larger families ([Lanjouw et al., 1998](#)), are likely to be involved in court cases ([Lanjouw and Schankerman, 2001](#)) and are renewed for longer time spans ([Lanjouw et al., 1998](#)). Fligner–Policello tests of stochastic equality confirms that these types of patents are systematically characterized by higher scores of BCI.¹⁹

Interestingly enough, for the case of steam engineering, there are some sources that highlight flawed designs: i) the list of patents covering perpetual motion engines scorned by [Dircks \(1861\)](#), ii) the list of technically unfeasible steam engines constructed by

England) as the original macroinvention in this field. He regards William Murdock’s “retort” (not patented) and Clegg’s inventions as macroinventions following Lebon’s “crucial insight”.

¹⁹ On the use of the Fligner–Policello test of stochastic equality in this context, see [Nuvolari and Tartari, 2011](#), p. 105).

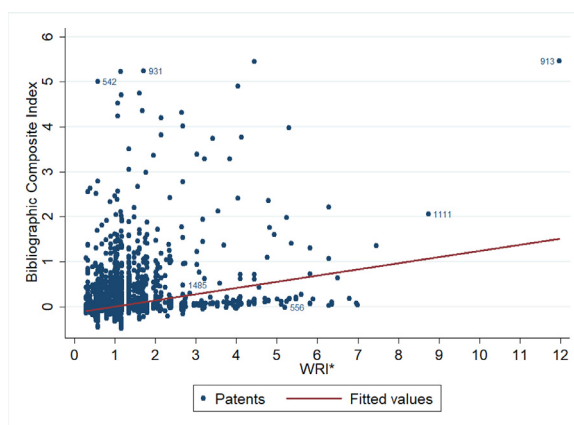


Fig. 6. Scatterplot of BCI and WRI*.

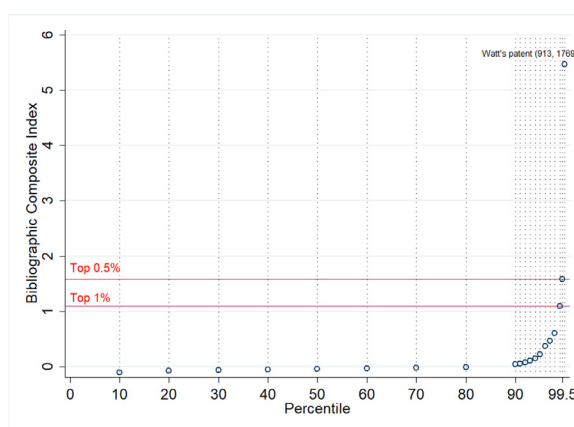


Fig. 7. Percentile plot of BCI.

MacLeod et al. (2003). In this case, Fligner–Policello tests of stochastic equality confirm that these “flawed” patents are systematically characterized by lower scores of BCI.²⁰ All these results are also confirmed if we employ the Mann–Wilcoxon test or a *t*-test of means.

Finally, Fig. 6 presents a scatterplot comparing BCI and WRI* for all patents in our sample. BCI recognizes the historical significance of Kay’s flying shuttle (patent n. 542), while Hull’s invention (patent n. 556) is only in the 75th percentile of the quality distribution. Similarly, the BCI correctly highlights the relative significance of Arkwright’s patent for the water-frame (patent n. 931) and for the carding engine (patent n. 1111). Also for other cases of patents of the same inventor, the BCI seems to offer a sensible assessment. James Watt’s separate condenser (patent n. 913) is rated as the most significant invention of our period, while his patent for improvements in the construction of furnaces (patent n. 1485) is considered a fairly average invention. More examples are reported in the Appendix (Table A8).

In a nutshell, the use of quality indicators derived from modern sources substantially mitigates some of the idiosyncrasies of Woodcroft’s *Reference Index*, plausibly leading to an improvement of the signal-to-noise ratio of the BCI with respect to the WRI*.

4. Patterns of innovation during the Industrial Revolution

Fig. 7 shows the whole range of the distribution of BCI by means of percentiles. The point in the right upper-corner is James Watt’s patent for the separate condenser (n. 913) which is the maximum value of BCI in our sample. The absolute value of BCI declines rapidly as soon as one moves away from the patents with the highest value. Accordingly, following the modern literature on innovation studies, we identify as macroinventions the patents in the extreme upper tail of the patent quality distribution (Ahuja and Lampert, 2001; Trajtenberg, 1990; Kelly, Papanikolaou, Seru, Taddy). In particular, Figure 7 shows a very sharp drop-off in the value of BCI between the maximum and the 99.5th percentile. This suggests that considering the top 0.5% patents, as we have done in

²⁰ In Appendix (Table A9) we show that WRI* (possibly because reflecting some bouts of over-enthusiasm of contemporary observers) is less effective in discriminate these flawed patents than the BCI.

Appendix Table A11, would extract the salient segment of the upper tail of the quality distribution. It is worth noting that our results are robust if we adopt alternative cut-off points for the definition of macroinventions such as the top 1% or the top 100 patents.²¹

4.1. The time profile of inventive activities

Mokyr's view is that macro- and microinventions are the outcomes of two distinct generating processes (Mokyr, 1990, p. 295). Macroinventions are generated by an essentially serendipitous search process. On the other hand, microinventions are the result of continuous and cumulative improvements of the technologies in use and as such should display temporal persistence. To investigate this hypothesis, we test whether the arrival process of macroinventions exhibits any degree of time-clustering. In particular, we adopt the approach introduced by Silverberg and Verspagen, 2003, see also Sahal, 1974) and we assume that inventions are count data generated by a point process. Accordingly, we can use Poisson and Negative Binomial regressions to estimate the yearly number of macro- and microinventions (Cameron and Trivedi, 1998). A time homogeneous Poisson process is characterized by complete randomness since each event (an invention in this case) is independent from the occurrence of other events. On the contrary, a negative binomial process is characterized by realizations that tend to cluster in specific spells of time (overdispersion). The main thrust of our exercises consists in fitting these distributions to the actual time series of macro- and microinventions, in order to see if they provide a good description of the observed patterns. We also control whether the arrival rate of the distribution follows time trends of different orders. More specifically, indicating with Y_i the yearly number of either macro- or microinventions, we estimate the following type of specifications:

$$Y_i = \text{Poisson}(\mu) \quad \text{with} \quad \ln(\mu) = c + \beta_1 t + \beta_2 t^2 + \beta_3 t^3 \quad (5)$$

$$Y_i = \text{Negative Binomial}(\mu) \quad \text{with} \quad \ln(\mu) = c + \beta_1 t + \beta_2 t^2 + \beta_3 t^3 \quad (6)$$

where μ is the arrival rate parameter and t is a time trend. The negative binomial distribution is characterized by a mean μ and a variance $\mu(1 + \alpha\mu)$. A test of the Poisson against the negative binomial specification can be implemented by means of a Likelihood Ratio test of the null hypothesis that $\alpha = 0$. Finally, we also carry out a Box–Ljung test of the residuals to further assess the possible existence of unexplained time clustering in the arrival rate of inventions (Silverberg and Verspagen, 2003).

Our results (Tables 5 and 6) show that macroinventions display neither overdispersion nor autocorrelations in the residuals.²² This basically suggests that the occurrence of macroinventions does not display any time clustering in the sense of time spells of low and high innovation activity. For microinventions, instead, the hypothesis of equidispersion is rejected in favor of the negative binomial specification.

Furthermore, the series of the residuals shows strong autocorrelation, suggesting that the data generating process of microinventions is probably characterized by some mechanisms that induce time persistence.²³ In this respect, it is interesting to notice that if we include GDP (Broadberry et al., 2015) among the regressors of the models (2) and (3) we find a significant correlation in the case of microinventions, but not for macroinventions (Table A12 in Appendix). Our result seems therefore broadly consistent with some earlier claims on the pro-cyclicality in the fluctuations of patent counts (Ashton, 1948; Bottomley, 2014b), but only for microinventions. Clearly, at this stage, this must be regarded merely as a preliminary result, to be further tested in research designs equipped with a more refined characterization of the economic context (development cost, financial constraints, etc.) in which the two types of innovation take place.

The different structure between the process generating macroinventions and microinventions is also impressionistically apparent from Fig. 8, which compares the number of inventions of each type per year. Overall, the dynamics of macroinventions is described by a simple time-homogenous Poisson process, which is well in tune with a large role played by serendipity, while the dynamics of microinventions displaying cumulative effects points to a possible conditioning of economic factors Crafts (1995).

Some further considerations on the time profile of macro- and microinventions emerge when we observe the cumulative distribution of inventions over time (Fig. 9). The thick brown line in each figure represent the cumulative distribution of macroinventions vis-à-vis microinventions for different set of patents (textiles, engines, machinery and all patents in the sample). In each panel of the figure, the curve shows the cumulative share of macroinventions that have taken place in correspondence of the cumulative share of microinventions indicated in the horizontal axis. For instance, the upper left figure shows that by 1800, over half of the macroinventions of the period 1700–1850 had already occurred, while the corresponding cumulative share for microinventions is only 16%. In other words, the diagrams represent Lorenz curves of the “time inequality” in the distribution of macro- and microinventions: a perfectly equal co-occurrence in the cumulative arrival of the two type of inventions would be depicted by a straight line with a

²¹ The top 1% definition of macroinventions includes both Clegg's and Tennant's patents discussed above.

²² These results are robust to alternative definitions of macroinventions (eg, top 100 or top 1% patents) and to the inclusions of sectoral dummies in the regressions. One might be afraid that the procedure through which we cleansed the raw quality indicators might lead to the absence of time-clustering. However, this is not the case since the ranking of the top quality inventions is extremely robust even when we construct the BCI without time controls or with the raw indicators (Table A10 in Appendix).

²³ An alternative way to study the difference between the time profile of macro- and microinventions is by means of test of stationarity of the time series. In an unreported augmented Dickey–Fuller test we find that the test strongly rejects the null hypothesis of the presence of a unit root in the macroinvention series. In other words, macroinventions seem to follow a stable mean reverting process, which can be interpreted in terms of a substantially stochastic (and therefore exogenous) occurrence of macroinventions in this historical phase as suggested by Crafts (1977, 1995).

Table 5
Regression results, Poisson and negative binomial models with arrival rate for macroinventions as a function of time.

Model	Patents	c	β_1	β_2	β_3	α	LR test	logL	Wald test	Pseudo R^2	Q test
Poisson	Top 0.5%	−0.8429*** (0.1319)						−131.402			50.936***
Neg Bin	Top 0.5%	−0.84292*** (0.1321)				0.3107	NOT reject	−130.869			50.936***
Poisson	Top 0.5%	−1.809*** (0.2879)	0.011*** (0.0026)					−124.187	19.13***	0.055	30.1501*
Neg Bin	Top 0.5%	−1.8285*** (0.3307)	0.0114*** (0.0032)			0.1280	NOT reject	−124.071	13.60***	0.052	30.1211*
Poisson	Top 0.5%	−3.689*** (0.8409)	0.064** (0.0193)	−0.030**a (0.0104)a				−118.626	14.07***	0.097	23.0980
Neg Bin	Top 0.5%	−3.689*** (0.8013)	0.064** (0.0185)	−0.030**a (0.0101)a		0.0048c	NOT reject	−118.626	24.49***	0.094	23.0985
Poisson	Top 0.5%	−3.045* (1.1938)	0.0312 (0.0505)	0.0144a (0.0628)a	−0.0178c (0.0024)b			−118.381	21.08***	0.099	25.8504
Neg Bin	Top 0.5%	−3.045** (1.129)	0.0312 (0.0485)	0.0143a (0.0633)a	−0.0179c (0.0025)b	0.0001a	NOT reject	−118.381	24.98***	0.095	25.8504

Note: *, **, *** denote significance at 5%, 1% and 0.1% level. c , β_1 , β_2 and β_3 are the coefficients on the constant and the polynomials of time (first, second and third degree, respectively). Estimated coefficients are sometimes multiplied by the following factors: $a = 100$, $b = 1000$, $c = 10,000$. α is the parameter for overdispersion in the negative binomial model for which a likelihood-ratio test (LR test) of $H_0 : \alpha = 0$ (i.e. no overdispersion) is carried out. The last column give the Box–Ljung Q statistics on the standardized residuals of H_0 : no time autocorrelation. In this case, a significant value of the test statistics means that we reject H_0 . Following [Silverberg and Verspagen, 2003](#), we set $k = 20$. The period considered is 1700–1850 (151 observations).

Table 6
Regression results, Poisson and negative binomial models with arrival rate for microinventions as a function of time.

Model	Patents	c	β_1	β_2	β_3	α	LR test	logL	Wald test	Pseudo R^2	Q test
Poisson	All	-4.4608*** (0.1211)						-10950.859			1091.1466***
Neg Bin	All	4.461*** (0.1103)				1.827	reject	-803.643			1091.1466***
Poisson	All	0.4222*** (0.0957)	0.038*** (0.0009)					-824.490	1993.45***	0.9247	159.5699***
Neg Bin	All	0.641*** (0.0724)	0.036*** (0.0006)			0.0585	reject	-572.144	463.00***	0.2881	193.2231***
Poisson	All	1.127*** (0.1468)	0.023*** (0.0034)	0.073***b (0.0018)a				-789.415	3047.81***	0.9279	122.4661***
Neg Bin	All	0.851*** (0.1249)	0.030*** (0.0030)	0.034*b (0.0016)a		0.0565	reject	-570.130	467.03***	0.2906	146.7201***
Poisson	All	0.310 (0.2766)	0.059*** (0.0114)	-0.037**a (0.0001)	0.016**c (0.0054)c			-765.420	2777.19***	0.9301	92.4250***
Neg Bin	All	0.795*** (0.1875)	0.033*** (0.0086)	-0.001a (0.0115)a	0.0018c (0.0045)c	0.0559	reject	-570.047	467.19***	0.2907	135.6694***

Note: *, **, *** denote significance at 5%, 1% and 0.1% level. c , β_1 , β_2 and β_3 are the coefficients on the constant and the polynomials of time (first, second and third degree, respectively). Estimated coefficients are sometimes multiplied by the following factors: $a = 100$, $b = 1000$, $c = 10,000$. α is the parameter for overdispersion in the negative binomial model for which a likelihood-ratio test (LR test) of $H_0: \alpha = 0$ (i.e. no overdispersion) is carried out. The last column give the Box-Ljung Q statistics on the standardized residuals of H_0 : no time autocorrelation. In this case, a significant value of the test statistics means that we reject H_0 . Following Silverberg and Verspagen, 2003, we set $k = 20$. The period considered is 1700–1850 (151 observations).

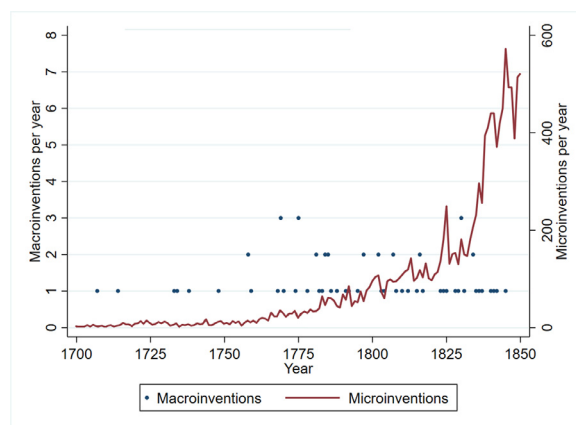


Fig. 8. Number of micro- and macroinventions per year. Note: the dots plot the yearly number of macroinventions (patents in the 99.5th percentile of quality) while the line shows the number of microinventions patented each year.

45 degree slope. The figure shows that most macroinventions occurred in the period 1750–1800, consistently with the traditional chronology of the Industrial Revolution (Landes, 1969; Nuvolari and Tartari, 2011). Fig. 9 also indicates that the cumulative distribution of macroinventions precedes the cumulative distribution of microinventions. This is again aligned with Mokyr's original intuition that macro- and microinventions are complementary features of technological progress, with macroinventions prompting cumulative streams of microinventions, albeit with varying lags and knock-on effects (Rosenberg, 1982, pp. 62–70).²⁴ Interestingly enough, this result is robust across sectors and technologies. If anything, this behavior is even more pronounced for textiles and engines, two of the most dynamic industries of the Industrial Revolution, possibly indicating that some prototype macroinventions in this fields required protracted streams of microinventions for their full exploitation.

²⁴ The point is also stressed by Constant (1973, p. 572): "... our model and its application raise questions about those analyses that attempt to use gross patent statistics or 'leading' macro-investment patterns as indicators of all forms of technological progress. Neither gross investment nor number of patents in a field is an adequate guide to emerging paradigmatic change... Both patenting and investment follow rather than lead paradigmatic change."

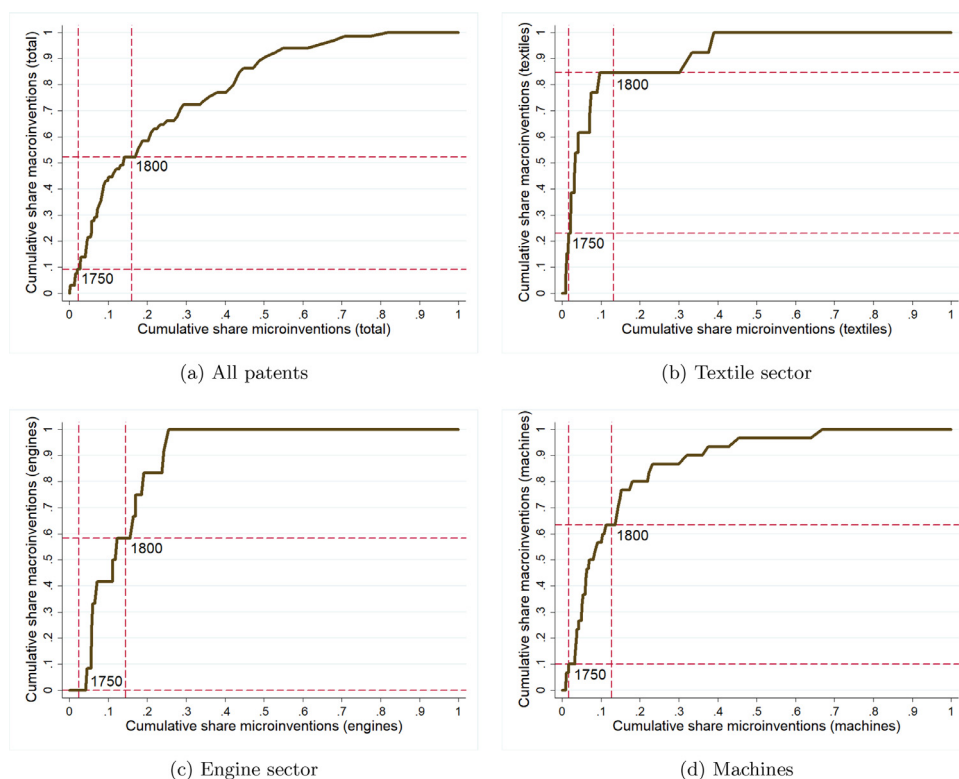


Fig. 9. Lorenz curves of microinventions vs macroinvention shares over time. *Note:* patents related to engine and textile sectors are taken from the classification of [Nuvolari and Tartari, 2011](#); machines are identified from the title of the patent in [Woodcroft \(1854b\)](#).

Table 7

Examples of stated aims of invention for three macroinventions.

Patent no.	Year	Inventor	Invention	Excerpt from Woodcroft (1854)	Stated aims
962	1770	James Hargreaves	Spinning jenny	“[...] making an engine [...] to be managed by one person only, which will spin, draw, and twist 16 or more threads at a time by a motion of one hand and a draw of the other”	Save labor; save time
1420	1784	Henry Cort	Puddling process	“[...] manufacturing iron and steel into bars [...] of purer quality, in larger quantity, by a more effectual application of fire and machinery, and with greater yield”	Save capital and raw materials; improve quality
1645	1788	Andrew Meikle	Threshing machine	“[...] the corn is thereby separated from the straw in less time, and in more effectual manner than by threshing or any other manner”	Save time; improve quality

Note: descriptions are taken from [Woodcroft \(1854b\)](#) and stated aims are classified using the methodology of [MacLeod \(1988\)](#).

4.2. Characteristics of micro- and macroinventions

[Allen \(2009, p. 136\)](#) has argued that macroinventions drastically changed factor proportions by substituting capital and energy for labor. In his account, high wages prompted the search for labor-saving new technologies. Microinventions, on the other hand, were, by and large, the outcome of cumulative processes of learning-by-doing and learning-by-using that increased the overall efficiency of both capital and labor and, consequently, they were neutral with respect to factor utilization. To test these conjectures, we exploit the short description of inventions contained in Woodcroft’s volume, *Title of Patents of Inventions Chronologically Arranged, 1617–1852 (1854b)*. The description is essentially a verbatim excerpt of the original patent specification. For many patents granted before 1800, it is possible to surmise from these compact descriptions the “stated aim” of the invention (from the inventor’s perspective).

We follow the approach of Christine [MacLeod \(1988, pp. 158–181\)](#) in her analysis of the goals of invention in the full corpus of patent specifications during the XVIII century: from each invention we identify two main stated aims. If only one aim is clearly described, we count this once and mark the second aim as “unspecified”. This ensures the comparability between our analysis

Table 8
Patentees' stated aims of invention, 1700–1799.

Stated aim	Top 0.5%	Top 1%	Top 2%	All patents
Create employment	0	1.7	1.2	1.9
Improve working conditions	0	0	2.3	1.4
Save labor	2.9	3.4	4.7	4.2
Save time	11.8	8.5	7	5.2
Save capital and raw materials	8.8	5.1	7	30.8
Reduce consumer price	5.9	5.1	3.5	3.7
Improve quality	32.4	27.1	25.6	29.3
Import substitution	0	1.7	1.2	3.6
Government revenue	0	0	0	1
Other government benefits	5.9	3.4	2.3	2.1

Note: Columns 2, 3 and 4 report the share of patents in that percentile of quality that mention each of the listed aims of invention. Figures are expressed as a percentage of the 34, 59 and 86 patents respectively granted for macroinventions in the period 1700–1799 (see text for details). The last column is taken from MacLeod (1988), Table 9.1 p. 160, who considered 2240 patents in the period from 1660 to 1799. This means that unfortunately the data are not strictly comparable, but given the low number of patents granted before 1700 (on average, less than four per year) and that the only macroinvention that we excluding is Thomas Savery's steam engine of 1698, the comparison presented remains informative.

Table 9
Patents for inventions intended to save labor, 1700–1799.

Patent aim	Top 0.5%	Top 1%	Top 2%	All patents
Labor-saving stated	2.9	3.4	4.7	3.9
Effectively labor-saving	38.2	38.9	38.4	15.3

Note: The last column is taken from MacLeod (1988), Table 9.2 p. 170. Unfortunately, the data are not strictly comparable because MacLeod considered the entire period from 1660 to 1799 (see the note to Table 8). The methodology used to find patents covering inventions effectively labor saving is described in the text and is the same of MacLeod (1988, pp. 170 and 257).

of macroinventions and MacLeod's findings on the full patent corpus. Table 7 illustrates the application of this method for three macroinventions.²⁵

Table 8 compares the stated aims of inventions in our set of macroinventions with MacLeod's analysis of the whole patent sample in the period 1700–1799. The table suggests that microinventions were mostly concerned with saving capital, raw materials and other inputs. Among macroinventions, the share of innovations in that category is significantly smaller, while the incidence of other motivations is very similar. At all events, the results of Table 8 must be interpreted with caution: in this historical period, not surprisingly, inventors were still reluctant to boast the possible labor-saving impact of their inventions (MacLeod, 1988, p. 166). Hence, it is likely that the share of labor-saving inventions in Table 8 understates their actual proportion. Following again MacLeod (1988), we repeat the analysis using a different classification approach which seeks to discern from the patent description the actual labor-saving effect of the invention beyond the explicit wording of the specification.²⁶

Table 9 compares the labor-saving potential (using this broader classification) of macro- and microinventions. In this case, we find a considerably larger share of labor-saving inventions for macroinventions (38%) than for microinventions (15% of all patents). The reason for this difference is that a large share of macroinventions consisted of machines: they accounted for about half of the top-quality patents, while only little more than 20% of microinventions were related to machines. In this way, Table 9 highlights that, in this historical phase, the search for labor-saving innovation largely consisted in the design and developments of machines. Overall, these findings are consistent with Allen (2009)'s view of a structural difference in the factor-saving biases between macro- and microinventions, and, in particular, with the notion that macroinventions were characterized by a stronger labor-saving bias.²⁷

²⁵ Obviously, this method does not consider product innovations (e.g. canned food). However, more than 85% of our set of macroinventions pertains to production processes (mostly with the aim of reducing cost or improving quality).

²⁶ MacLeod regards as "genuine" labor-saving inventions "[...] those labor-saving machines and techniques which contemporaries identified as such, e.g. spinning, carding, threshing machines or power-looms". However, in the labor-saving category are not included "machines and techniques whose labor-saving potential was commonly overlooked by contemporaries, unless a particular invention would increase its labor productivity further. Thus, wind, water, horse and steam engines were excluded, as were e.g. handlooms, the majority of stocking-frame attachments, sugar mills, the printing press (but not mechanical textile printing)." (MacLeod, 1988, p. 257).

²⁷ It should be noted that our findings do not imply that technical change in this period was generally characterized by a labor-saving bias, but simply that there was a higher incidence of machinery among macroinventions. At the same time, our study does not permit to assess whether this impetus towards mechanization was actually prompted by high wages (Allen, 2009) or by the limitations of traditional production systems with

Table 10
Determinants of micro- and macroinventions.

	Logit		OLS	Quantile regression					
	Top 1%	Top 0.5%		Q(0.25)	Q(0.50)	Q(0.75)	Q(0.95)	Q(0.99)	Q(0.995)
Number of inventors	-0.5389* (0.28607)	-0.1006 (0.30428)	0.0004 (0.00680)	0.0011 (0.00103)	0.0002 (0.00066)	0.0000 (0.00163)	0.0132 (0.02273)	0.1405* (0.08122)	0.0667 (0.22226)
Previous patents	0.9094*** (0.18850)	0.4404 (0.28354)	0.0445*** (0.00520)	0.0014* (0.00075)	0.0058*** (0.00091)	0.0266*** (0.00227)	0.1695*** (0.02624)	0.2582*** (0.08002)	0.1437 (0.11009)
Engineer	1.0026*** (0.21796)	1.1294*** (0.30896)	0.0517*** (0.00779)	0.0036*** (0.00126)	0.0067*** (0.00109)	0.0268*** (0.00265)	0.2602*** (0.04491)	0.3359** (0.13821)	0.6839*** (0.24117)
Foreign Inventor	0.0448 (0.53756)	-0.4461 (1.05258)	-0.0032 (0.00577)	-0.0023* (0.00122)	-0.0018 (0.00132)	-0.0019 (0.00149)	-0.0144* (0.00747)	-0.1153** (0.05396)	-0.2746*** (0.09774)
Metropolitan	0.0318 (0.17808)	-0.0440 (0.25465)	0.0009 (0.00477)	-0.0002 (0.00041)	-0.0001 (0.00037)	0.0000 (0.00065)	0.0124* (0.00732)	0.0626 (0.06193)	0.1295 (0.08767)
Outsider	0.2375 (0.22144)	0.3403 (0.30296)	0.0035 (0.00762)	0.0000 (0.00038)	-0.0001 (0.00054)	0.0000 (0.00092)	-0.0032 (0.00973)	0.0144 (0.12262)	0.1487 (0.19670)
Constant	-5.7500*** (0.46132)	-7.3290*** (0.75203)	0.0022 (0.11964)	-0.0637*** (0.00194)	-0.0437*** (0.00195)	-0.0299*** (0.00352)	-0.0150 (0.02561)	-0.0474 (0.16049)	0.3115 (0.35806)
Industry dummies	YES	YES	YES	YES	YES	YES	YES	YES	YES
Time dummies	YES	YES	YES	YES	YES	YES	YES	YES	YES
Log-likelihood	-340.008	-623.989							
(Pseudo) R2	0.1509	0.1446	0.0126	0.2462	0.1180	0.0438	0.1058	0.2232	0.2970
Observations	12690	11356	13070	13070	13070	13070	13070	13070	13070

Note: *, **, *** denote significance at 10%, 5% and 1% level. Dependent variable for the first two columns is a dummy equal to 1 for inventions in the top 1% and top 0.5% of the quality distribution, respectively. Dependent variable for the remainder of the table is the absolute value of BCI of each patent. The variable “outsider” has been constructed in such a way to consider only the cases in which the invention was clearly not connected with the occupation of the patentee. When this dummy variable takes a value of 0 this does not mean that the inventor in question is an insider; this is also the case for all those inventors listed as “esquire”, “gentleman” or “baronet”. We also excluded from the count of outsiders patent agents and inventions imported from abroad. Metropolitan is a dummy variable indicating whether any of the patentees was living in a town with more than 50,000 inhabitants at the time he was granted the patent. Logit and OLS models are estimates using robust standard errors, while standard errors for the quantile regression coefficients are obtained using 500 bootstrap replications. We included time dummies for each decade and industry dummies from Nuvolari and Tartari, 2011.

4.3. The determinants of macro- and microinventions

Our data allow to study the determinants of macro- and microinventions by means of a simple multivariate regression analysis. The results are reported in Table 10. We consider three main models: (i) a logit specification with the top 1% and top 0.5% patents as dependent variables, (ii) a simple OLS regression with BCI as dependent variable, (iii) a quantile regression model of different percentiles of BCI. As predictors we use a number of characteristics of patentees retrieved from Woodcroft (1854b).

Allen (2009, p. 149) has argued that macroinventions were mostly due “outsiders” who could rely on insights originating “outside their immediate industrial experience” and experiment with factor configurations distant from the current best-practice. This conjecture is not confirmed by the results of Table 10: the coefficient of the variable outsider is not statistically significant. Being resident in a metropolitan area, co-patenting with other inventors or being a foreign inventor are also characteristics that are not significant positive predictors of a macroinvention.²⁸ The only positive predictor of macroinventions is an engineering occupation. The role played by inventors with specialized engineering competences in the development of macroinventions resonate well with the findings of some other recent contributions (van der Beek et al., 2020; Cookson, 2018; Hanlon, 2020). This result links with the high incidence of machinery among macroinventions pointed out in the previous section and is in line with the notion that “mechanical engineering” was the fundamental “technological paradigm” of the Industrial Revolution (Von Tunzelmann, 1995).

Finally, it is interesting to note that the previous experience in patenting of the inventor –measured with a dummy indicating whether the inventor in question had already one previous patent prior to the focal one– is in general positively correlated with higher patent quality, but this result does not extend to the uppermost part of the quality distribution.²⁹ Again, this finding is suggestive of the essentially serendipitous nature of macroinventions.

respect to a burgeoning demand (Cookson, 2018; Landes, 1969) possibly reinforced by attempts of “dilution” of skilled labor using women and children (Berg, 1994; Humphries, 2013). For a recent discussion of the geography of the Industrial Revolution from this second perspective see Kelly et al. (2020).

²⁸ The insignificant coefficient of metropolitan areas is again in line with Mokyr’s intuition that the occurrence of high-quality inventions is relatively insensitive from economic determinants.

²⁹ The variable was constructed using Woodcroft (1854a). We have tried as much as possible to disambiguate potential homonyms checking in biographical dictionaries and other sources. In case of a patent taken by multiple inventors, the dummy indicates whether at least one of the inventors had a previous patent

4.4. A tentative interpretation

In a perceptive study of the conceptualizations of macroinventions of Mokyr (1990) and Allen (2009), Crafts (2011) has noted that they actually focus on different phases of the innovation process. Generally speaking, we can assume that the development of innovations consists of a three main stages: (i) ideas, (ii) “research and development” investments, (iii) incremental improvements. Mokyr considers macroinventions as referring mostly to the first stage. Accordingly, he is keen to highlight the role played by flashes of genius and serendipity (Yaqub, 2018). For Allen, macroinventions encompass both the first and the second stage (in particular the investments and the efforts necessary to transform the idea in a working prototype). If we take this perspective, economic inducements may clearly represent a critical determinant for the occurrence of macroinventions.

In our interpretation, which is similar to that of Crafts (2011), Mokyr and Allen are emphasizing complementary dimensions of macroinventions. More precisely, they are pointing to two necessary, but not sufficient, conditions for the occurrence of macroinventions. On reflection, in most cases, both favorable contingencies and investment and research efforts were simultaneously necessary for a successful macroinvention. For example, if we consider the case of James Watt’s separate condenser, one can easily point to the flash of inspiration during the usual Sunday walk in May 1765 and to the more than ten years of experiments before the development of a satisfactory engine (Hills, 2002, p. 53). On the other hand, it is possible to mention inventions, that notwithstanding major investments, were technological failures. Perhaps one of the most revealing examples of this period is Brunel’s atmospheric railway (Buchanan, 1992). Note that our perspective does not rule completely out a possible economic conditioning on macroinventions; it just acknowledges the existence of a significant and necessary serendipitous component in their occurrence.³⁰

This view fits well with our reconstruction of the patterns of macro- and microinventive activities. As we have seen, the occurrence of macroinventions can be accounted by means of a time homogeneous Poisson process, which is in line with the notion of a significant role of serendipity. On the other hand, our scrutiny on the inventions’ aims point to economic factors as possible determinant of the bias of macroinventions. In this perspective, economic inducements demarcate the relevant portions of the space of technological opportunities where inventors will search, while serendipity and contingencies will affect the success of the search process within this domain.³¹ Within this interpretative framework, the results concerning the role of engineers indicate that specialized mechanical skills and competences were in many cases also necessary for the effective search of space of technological opportunities.

5. Conclusions

In this paper, we have introduced a new composite indicator of the quality of English patents during the period 1700–1850. This new *Bibliographic Composite Indicator* (BCI) synthesizes two different, but complementary assessments of the quality of patents: the technical and economic significance as perceived by the specialized contemporary literature, measured by the number of references in Woodcroft (1862), and the historical importance as assessed by the modern historiography, informed by the benefit of hindsight. We have carried out a thorough examination of the properties of the BCI and tested its reliability with several robustness checks. The results are rather encouraging and it would seem that this new indicator represents a significant improvement over the WRI* introduced by Nuvolari and Tartari, 2011.³²

We have used the BCI for providing an empirical characterization of macro- and microinventions. We have established a significant difference in the time-profile of the two type of inventions. Furthermore, we have also found evidence that the sample of macroinventions was characterized by a large share of “machines” with a likely labor-saving bias. Finally, inventors with competences in mechanical engineering seem more effective in the generation of patents of higher quality, including macroinventions.

Our findings resonate with Crafts’ assessment of the Allen–Mokyr debate (Crafts, 2011). Allen and Mokyr are pointing to two distinct but complementary characteristics of inventive activities in this period. Accordingly, their analyses rather than opposing may be more fruitfully regarded as compatible. In this respect, as adumbrated by Crafts, an intriguing research agenda for the future would be the development of a new synthesis which could provide a comprehensive account of the patterns of innovation reconstructed in this paper.

The main limitation of our study is obviously that we are only considering only patented innovations. Moser (2005) has shown that in this period many innovations were not patented. However, some shreds of evidence suggest that the patenting propensity of breakthrough inventions was probably higher than for ordinary ones. For example Moser estimate an aggregate patenting rate of 11.1%, while Meisenzahl and Mokyr, 2012 reckon that 60% of the notable inventors of their sample took patents, with even higher shares in sectors such as textiles, iron and metallurgy. Similarly, Khan (2018) estimate a patenting rate of 80% in her sample of British “great inventors”.³³ Accordingly, we do not consider far-fetched to assume that the “representativeness” of our sample of macroinventions may be somewhat more accurate than for ordinary inventions.

³⁰ Concerning macroinventions, Allen (2009, p. 135) cites approvingly, Thomas Edison’s quip: “Invention is 1% inspiration and 99% perspiration”. In this perspective, our results’ pointing to the confluence of serendipity, investment and (engineering) capabilities at the roots of macroinventions suggest that perhaps Louis Pasteur’s dictum “Chance favors the prepared mind” (*“Le hasard ne favorise que les esprits préparés”*) may be a more appropriate characterization of the nature of innovation in this historical period.

³¹ This perspective is reminiscent of Crafts (1977, p. 437) who regarded macroinventions as the outcome of “stochastic search processes in which both economic inducements and scientific supply-side considerations play a part”.

³² For preliminary applications of BCI to the pottery industry and to the engineering trades, see Lane (2019) and Hanlon (2020).

³³ These patenting rates are in line with Dutton’s view (1984, p. 112) who noticed: “Knowledgeable contemporaries believed that almost all the important inventions were patented”. In any case, it is important to reckon that some fundamental breakthrough such as Crompton’s spinning

Acknowledgments

We thank the editor of this journal (CF) and two anonymous referees for useful suggestions. We have also benefited from the comments of Joel Mokyr, Abhishek Nagaraj, Elisabeth Perlman, Sameer Srivastava, Tania Treibich, Michelangelo Vasta, Bart Verspagen, as well as seminar and conference participants at University Côte d'Azur, UNU-MERIT, UC Berkeley-Haas, the EMAEE 2019 conference at SPRU-University of Sussex, the Economic History Research Lunch at UC Berkeley, and the Economic History Association Conference. We are indebted to Ralf Meisenzahl, Joel Mokyr, Olivier Gergaud, Morgane Louenan, and Etienne Wasmer for sharing their data. The usual disclaimers apply.

Supplementary material

Supplementary material associated with this article can be found, in the online version, at [10.1016/j.eeh.2021.101419](https://doi.org/10.1016/j.eeh.2021.101419)

References

- Adams, J.N., Averley, G., 1986. The patent specification. The role of Liardet V Johnson. *J. Legal Hist.* 7 (2), 156–177.
- Ahuja, G., Lampert, C., 2001. Entrepreneurship in the large corporation: a longitudinal study of how established firms create breakthrough inventions. *Strateg. Manag. J.* 22 (6–7), 521–543.
- Allen, R.C., 2009. *The British Industrial Revolution in Global Perspective*. Cambridge University Press, Cambridge.
- Allen, R.C., 2018. The hand-loom weaver and the power loom: a Schumpeterian perspective. *Eur. Rev. Econ. Hist.* 22 (4), 381–402.
- Ashton, T.S., 1948. Some statistics of the Industrial Revolution in Britain. *Manchester School* 16 (2), 214–234.
- van der Beek, K., Mokyr, J., Sarid, A., 2020. The wheels of change: technology adoption, millwrights, and persistence in Britain's industrialization. CEPR Discussion paper n. 14138.
- Berg, M., 1994. *The Age of Manufactures, 1700–1820: Industry, Innovation and Work in Britain*. Routledge, London.
- Bottomley, S., 2014a. The British Patent System during the Industrial Revolution 1700–1852: From Privilege to Property. Cambridge University Press, Cambridge.
- Bottomley, S., 2014b. Patenting in England, Scotland and Ireland during the industrial revolution, 1700–1852. *Explor. Econ. Hist.* 54, 48–63.
- Broadberry, S., Campbell, B.M.S., Klein, A., Overton, M., Van Leeuwen, B., 2015. *British Economic Growth, 1270–1870*. Cambridge University Press, Cambridge.
- Broadberry, S., Gupta, B., 2009. Lancashire, India, and shifting competitive advantage in cotton textiles, 1700–1850: the neglected role of factor prices. *Econ. Hist. Rev.* 62 (2), 279–305.
- Buchanan, R.A., 1992. The atmospheric railway of I.K. Brunel. *Soc. Stud. Sci.* 22 (2), 231–243.
- Cameron, A.C., Trivedi, P.K., 1998. *Regression Analysis of Count Data*. Cambridge University Press, Cambridge.
- Constant, E.W., 1973. A model for technological change applied to the turbojet revolution. *Technol. Cult.* 14 (4), 553–572.
- Cookson, G., 2018. *The Age of Machinery. Engineering the Industrial Revolution, 1770–1850*. Boydell & Brewer Limited, Woodbridge.
- Crafts, N., 1977. Industrial revolution in England and France: some thoughts on the question, 'why was England first?'. *Econ. Hist. Rev.* 30, 429–441.
- Crafts, N., 2011. Explaining the first industrial revolution: two views. *Eur. Rev. Econ. Hist.* 15 (1), 153–168.
- Crafts, N., 2021. Understanding productivity growth during the industrial revolution. *Econ. Hist. Rev.* forthcoming
- Crafts, N., Wolf, N., 2014. The location of the UK cotton textiles industry in 1838: a quantitative analysis. *J. Econ. Hist.* 74 (4), 1103–1139.
- Crafts, N.F.R., 1995. Exogenous or endogenous growth? The industrial revolution reconsidered. *J. Econ. Hist.* 55 (4), 745–772.
- David, P.A., 1975. *Technical Choice Innovation and Economic Growth: Essays on American and British Experience in the Nineteenth Century*. Cambridge University Press.
- Day, L., McNeil, I., 1996. *Biographical Dictionary of the History of Technology*. Routledge, London.
- De Rassenfosse, G., Jaffe, A.B., 2015. Are patent fees effective at weeding out low-quality patents? *J. Econ. Manag. Strategy* 27 (1), 134–148.
- Dircks, H., 1861. *Perpetuum Mobile: Or, Search for Self-Motive Power, During the 17th, 18th, and 19th Centuries*. E. & FN Spon.
- Dosi, G., 1982. Technological paradigms and technological trajectories: a suggested interpretation of the determinants and directions of technical change. *Res. Policy* 11 (3), 147–162.
- Dowey, J., 2017. *Mind Over Matter: Access to Knowledge and the British Industrial Revolution*. The London School of Economics and Political Science (LSE) Ph.D. thesis.
- Dutton, H.I., 1984. *The Patent System and Inventive Activity during the Industrial Revolution, 1750–1852*. Manchester University Press, Manchester.
- Gwet, K.L., 2014. *Handbook of Inter-Rater Reliability: The Definitive Guide to Measuring the Extent of Agreement Among Raters*. Advanced Analytics, LLC, New York.
- Hall, B.H., Jaffe, A.B., Trajtenberg, M., 2002. The NBER patent citation data file: lessons, insights and methodological tools. In: Jaffe, A.B., Trajtenberg, M. (Eds.), *Patents, Citations and Innovations*. MIT Press, Cambridge (MA).
- Hanlon, W.W., 2015. Necessity is the mother of invention: input supplies and directed technical change. *Econometrica* 83 (1), 67–100.
- Hanlon, W. W., 2020. *The rise of the engineer: inventing the professional inventor during the industrial revolution*. mimeo.
- Hills, R.L., 1970. *Power in the Industrial Revolution*. Manchester University Press, Manchester.
- Hills, R.L., 1989. *Power from Steam: A History of the Stationary Steam Engine*. Cambridge University Press, Cambridge.
- Hills, R.L., 2002. *James Watt: His Time in Scotland, 1736–1774, 1*. Landmark Publishing, Ashbourne.
- Humphries, J., 2013. The lure of aggregates and the pitfalls of the patriarchal perspective: a critique of the high wage economy interpretation of the British industrial revolution. *Econ. Hist. Rev.* 66 (3), 693–714.
- Hyde, C.K., 1977. *Technological Change and the British Iron Industry, 1700–1870*. Princeton University Press, Princeton.
- Jaffe, A.B., Trajtenberg, M., 2002. *Patents, Citations, and Innovations: A Window on the Knowledge Economy*. MIT press, Cambridge (MA).
- Kelly, B., Papanikolaou, D., Seru, A., Taddy, M., 2018. Measuring technological innovation over the long run. NBER Working Paper No. 25266.
- Kelly, M., Mokyr, J., O'Grada, C., 2020. The mechanics of the Industrial Revolution. CEPR Discussion Paper n. 14884.
- Khan, B.Z., 2005. *The Democratization of Invention: Patents and Copyrights in American Economic Development, 1790–1920*. Cambridge University Press, Cambridge.
- Khan, B.Z., 2018. Human capital, knowledge and economic development: evidence from the British Industrial Revolution, 1750–1930. *Cliometrica* 12 (2), 1–29.
- Khan, B.Z., Sokoloff, K.L., 1993. "Schemes of practical utility": entrepreneurship and innovation among "great inventors" in the United States, 1790–1865. *J. Econ. Hist.* 53 (2), 289–307.
- Kleinknecht, A., 1990. Are there Schumpeterian waves of innovations? *Cambridge J. Econ.* 14 (1), 81–92.
- Landes, D.S., 1969. *The Unbound Prometheus*. Cambridge University Press, Cambridge.
- Lane, J., 2019. Secrets for sale? innovation and the nature of knowledge in an early industrial district: the potteries, 1750–1851. *Enterp. Soc.* 20, 1–46.
- Lanjouw, J.O., Pakes, A., Putnam, J., 1998. How to count patents and value intellectual property: the uses of patent renewal and application data. *J. Ind. Econ.* 46 (4), 405–432.

mule or Maudslay's lathe were not patented and, therefore, our empirical characterization of macroinventions should be regarded as a preliminary appraisal to be complemented by further research on non-patented inventions.

- Lanjouw, J.O., Schankerman, M., 2001. Characteristics of patent litigation: a window on competition. *RAND J. Econ.* 32 (1), 129–151.
- Lanjouw, J.O., Schankerman, M., 2004. Patent quality and research productivity: measuring innovation with multiple indicators. *Econ. J.* 114 (495), 441–465.
- MacLeod, C., 1988. *Inventing the Industrial Revolution: The English Patent System, 1660–1800*. Cambridge University Press, Cambridge.
- MacLeod, C., Tann, J., Andrew, J., Stein, J., 2003. Evaluating inventive activity: the cost of nineteenth-century UK patents and the fallibility of renewal data. *Econ. Hist. Rev.* 56 (3), 537–562.
- Mathias, P., 1969. *The First Industrial Nation*. Methuen, London.
- Meisenzahl, R.R., Mokyr, J., 2012. The rate and direction of invention in the British Industrial Revolution: incentives and institutions. In: Lerner, J., Stern, S. (Eds.), *The Rate and Direction of Inventive Activity Revisited*. University of Chicago Press, Chicago, pp. 443–479.
- Mokyr, J., 1990. *The Lever of Riches: Technological Creativity and Economic Progress*. Oxford University Press, Oxford.
- Mokyr, J., 1991. Was there a British industrial evolution? *Res. Econ. Hist. Suppl.* 6, 253–286.
- Mokyr, J., 1999. Editor's introduction: the new economic history and the Industrial Revolution. In: Mokyr, J. (Ed.), *The British Industrial Revolution. An Economic Perspective*. Westview, Boulder.
- Mokyr, J., 2002. *The Gifts of Athena: Historical Origins of the Knowledge Economy*. Princeton University Press, Princeton.
- Mokyr, J., 2010. *The Enlightened Economy. An Economic History of Britain 1700–1850*. Yale University Press, Yale.
- Moser, P., 2005. How do patent laws influence innovation? Evidence from nineteenth-century world's fairs. *Am. Econ. Rev.* 95 (4), 1214–1236.
- Nuvolari, A., Tartari, V., 2011. Bennet Woodcroft and the value of English patents, 1617–1841. *Explor. Econ. Hist.* 48 (1), 97–115.
- Nuvolari, A., Tartari, V., Tranchero, M., 2021. Patent quality in England, 1700–1850. Inter-university Consortium for Political and Social Research [distributor], Ann Arbor, MI doi:10.3886/E142801V1.
- O'Brien, P., 1997. The micro foundations of macro invention: the case of the reverend edmund cartwright. *Text. Hist.* 28 (2), 201–233.
- O'Brien, P.K., Griffiths, T., Hunt, P., 1995. There is nothing outside the text, and there is no safety in numbers: a reply to Sullivan. *J. Econ. Hist.* 55 (3), 671–672.
- Reingold, N., 1960. U.S. patent office records as sources for the history of invention and technological property. *Technol. Cult.* 1 (2), 156–167.
- Robinson, J., 2004. Hulls [Hull], Jonathan. In: Matthew, H., Harrison, B. (Eds.), *Oxford Dictionary of National Biography*. Oxford University Press, Oxford.
- Rosenberg, N., 1982. *Inside the Black Box: Technology and Economics*. Cambridge University Press, Cambridge.
- Sahal, D., 1974. Generalized Poisson and related models of technological innovation. *Technol. Forecast. Soc. Change* 6, 403–436.
- Schmookler, J., 1966. *Invention and Economic Growth*. Harvard University Press, Cambridge (MA).
- Silverberg, G., Verspagen, B., 2003. Breaking the waves: a poisson regression approach to Schumpeterian clustering of basic innovations. *Cambridge J. Econ.* 27 (5), 671–693.
- Silverberg, G., Verspagen, B., 2007. The size distribution of innovations revisited: an application of extreme value statistics to citation and value measures of patent significance. *J. Econom* 139 (2), 318–339.
- Sokoloff, K.L., 1988. Inventive activity in early industrial America: evidence from patent records, 1790–1846. *J. Econ. Hist.* 48 (4), 813–850.
- Squicciarini, M., Dernis, H., Criscuolo, C., 2013. Measuring patent quality: indicators of technological and economic value. *OECD Working Paper* 2013/03.
- Squicciarini, M.P., Voigtländer, N., 2015. Human capital and industrialization: evidence from the Age of the Enlightenment. *Q. J. Econ.* 130 (4), 1825–1883.
- Sullivan, R.J., 1989. England's 'age of invention': the acceleration of patents and patentable invention during the industrial revolution. *Explor. Econ. Hist.* 26 (4), 424–452.
- Sullivan, R.J., 1990. The revolution of ideas: widespread patenting and invention during the english industrial revolution. *J. Econ. Hist.* 50 (2), 349–362.
- Tomory, L., 2012. *Progressive Enlightenment. The Origins of the Gaslight Industry, 1780–1820*. Cambridge (MA): MIT Press.
- Trajtenberg, M., 1990. A penny for your quotes: patent citations and the value of innovations. *RAND J. Econ.* 21 (1), 172–187.
- Trinder, B., 2013. *Britain's Industrial Revolution: The Making of a Manufacturing People*. Carnegie Publishing, Lancaster.
- Van Zeebroeck, N., 2011. The puzzle of patent value indicators. *Econ. Innov. New Technol.* 20 (1), 33–62.
- Von Tunzelmann, G.N., 1995. *Technology and Industrial Progress: The Foundations of Economic Growth*. Edward Elgar Publishing.
- Woodcroft, B., 1854. *Alphabetical Index of Patentees of Inventions, 1617–1852*. G.E. Eyre & W. Spottiswoode, London.
- Woodcroft, B., 1854. *Titles of Patents of Invention Chronologically Arranged, 1617–1852*. G.E. Eyre & W. Spottiswoode, London.
- Woodcroft, B., 1862. *Reference Index of English Patents of Invention, 1617–1852*. G.E. Eyre & W. Spottiswoode, London.
- Yaqub, O., 2018. Serendipity: towards a taxonomy and a theory. *Res. Policy* 47 (1), 169–179.
- Zeev, N.B., Mokyr, J., Van Der Beek, K., 2017. Flexible supply of apprenticeship in the British industrial revolution. *J. Econ. Hist.* 77 (1), 208–250.